

GISUN power

Supplied by

 **JOG**
International Ltd.



410-420W Solar Panel

Electrical Characteristics

Module Type	M6-72-410	M6-72-415	M6-72-420
	STC	STC	STC
Maximum Power at STC (Pmp)	410	415	420
Open Circuit Voltage (Voc)	49.6	49.8	50.0
Short Circuit Current (Isc)	10.23	10.30	10.37
Maximum Power Voltage (Vmp)	42.1	42.3	42.5
Maximum Power Current (Imp)	9.74	9.82	9.90
Module Efficiency at STC(η m)	20.3	20.6	20.9
Power Tolerance	(0, +4.99)		
Maximum System Voltage	1000 VDC		
Maximum Series Fuse Rating	20A		

STC: Irradiance 1000 W/m² module temperature 25°C AM=1.5;

Temperature Characteristics

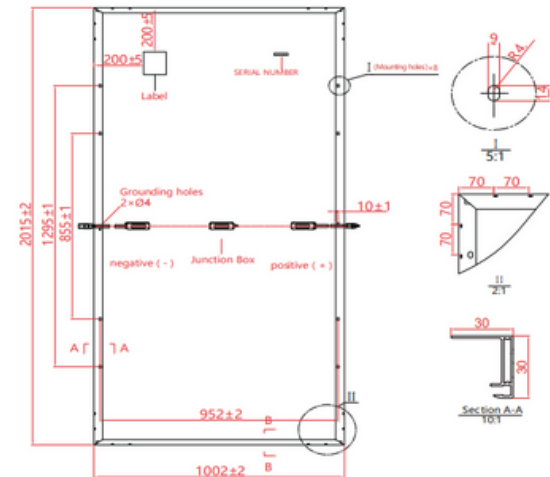
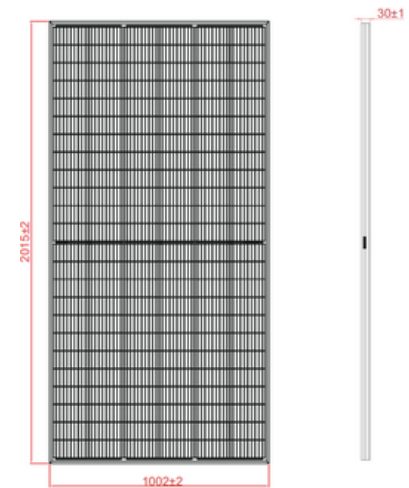
Pmax Temperature Coefficient	-0.36 %/°C
Voc Temperature Coefficient	-0.28 %/°C
Isc Temperature Coefficient	+0.05 %/°C
Operating Temperature	-40~+85 °C
Nominal Operating Cell Temperature (NOCT)	45±2°C
Fire Rating	Class C

Mechanical Specifications

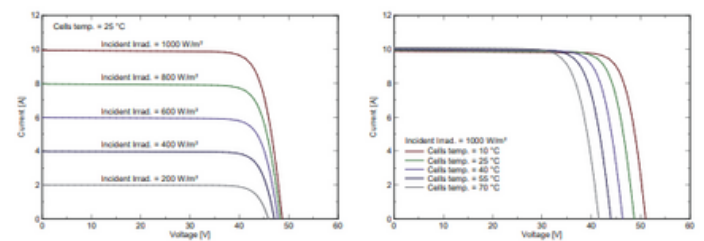
External Dimension	2015 x 1002 x 30 mm
Weight	23.0kg
Solar Cells	PERC Mono 158.75x79.375mm (144pcs)
Front Glass	3.2 mm AR coating tempered glass, low iron
Frame	Anodized aluminium alloy
Junction Box	IP68,3 diodes
Output Cables	4.0 mm ² ,Portrait:1100mm or Customized Length
Connector	Genuine MC4 Connector /Compatible MC4 Connector
Mechanical Load	Front side 5400 Pa/ Rear side 2400 Pa

Packing Configuration

	2015x 1002 x 30 mm
Container	40'HQ
Pieces per Pallet	36+36+7
Pallets per Container	11
Pieces per Container	869



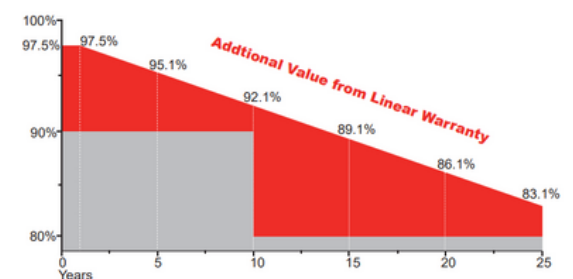
I-V Curve



Product Certificates



Warranty



Guarantee on product material and workmanship



Linear power output warranty