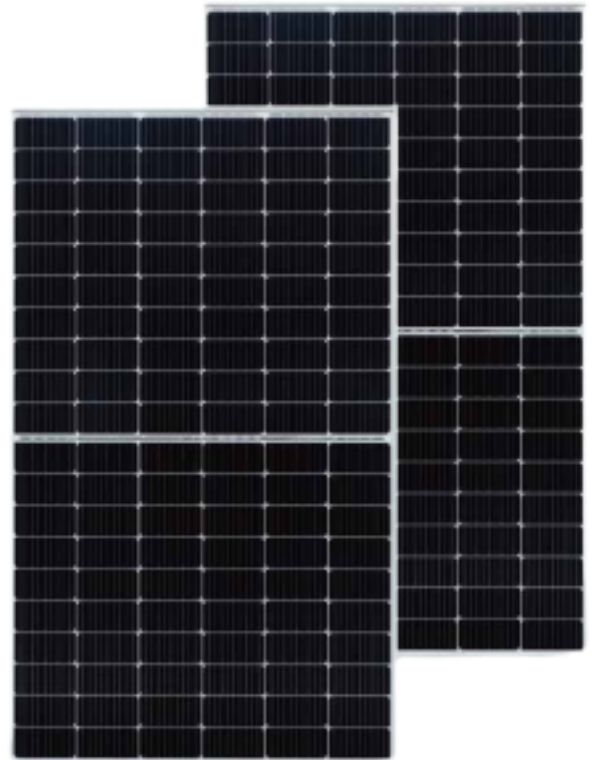


# BISTAR

TP6L60M  
TP6L60M(H) **120 HALF-CELL**

**435 - 455W**

9BB half-cut mono perc



## KEY FEATURES



### 9BB half-cut cell technology

New circuit design, lower internal current, lower Rs loss Ga doped wafer, attenuation <2% (1st year) / ≤0.55% (Linear)



### Significantly lower the risk of hot spot

Special circuit design with much lower hot spot temperature



### Lower LCOE

2% more power generation, lower LCOE



### Excellent Anti-PID performance

2 times of industry standard Anti-PID test by TUV SUD



### IP68 junction box

High waterproof level

## SYSTEM & PRODUCT CERTIFICATES

- IEC 61215 / IEC 61730 / UL 61730
- ISO 9001: 2015 Quality Management System
- ISO 14001: 2015 Environment Management System
- ISO 45001: 2018 Occupational Health and Safety Management Systems



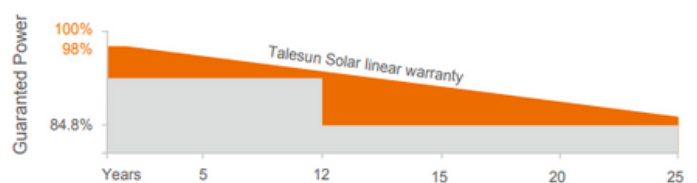
## PERFORMANCE WARRANTY

**12**  
Years  
Quality  
assurance

**25**  
Years  
Power output  
guarantee

Linear Performance Warranty

Standard Performance Warranty



## ELECTRICAL PARAMETERS

### Performance at STC (Power Tolerance 0 ~ +3%)

Maximum Power (Pmax/W)	360	365	370	375	380
Operating Voltage (Vmpp/V)	34.3	34.6	34.9	35.2	35.5
Operating Current (Impp/A)	10.50	10.56	10.61	10.66	10.71
Open-Circuit Voltage (Voc/V)	40.7	40.9	41.1	41.3	41.5
Short-Circuit Current (Isc/A)	11.15	11.20	11.26	11.31	11.37
Module Efficiency $\eta_m$ (%)	19.7	20.0	20.3	20.5	20.9

### Performance at NMOT

Maximum Power (Pmax/W)	267	271	274	278	282
Operating Voltage (Vmpp/V)	31.6	31.9	32.1	32.3	32.6
Operating Current (Impp/A)	8.46	8.50	8.55	8.60	8.64
Open-Circuit Voltage (Voc/V)	37.9	38.0	38.2	38.4	38.6
Short-Circuit Current (Isc/A)	9.00	9.04	9.09	9.13	9.17

STC: Irradiance 1000W/m<sup>2</sup>, Cell Temperature 25°C, Air Mass AM1.5

NMOT: Irradiance at 800W/m<sup>2</sup>, Ambient Temperature 20°C, Air Mass AM1.5, Wind Speed 1m/s

## MECHANICAL SPECIFICATION

Cell Type	Monocrystalline
Cell Dimensions	166*166mm
Cell Arrangement	120 (6*20)
Weight	21kg (46.3lbs)
Module Dimensions	1755*1038*35mm (69.09*40.87*1.38inches)
Cable Length	Portrait 300mm/Landscape 1200mm/Customized
Cable Cross Section Size	TUV: 4mm <sup>2</sup> (0.006inches <sup>2</sup> ) /UL: 12AWG
Front Glass	3.2mm (0.13inches) AR Coating Tempered Glass
No. of Bypass Diodes	3
Packing Configuration (1)	31pcs/carton, 806pcs/40hq
Packing Configuration (for USA)	31pcs/carton, 806pcs/40hq
Frame	Anodized Aluminium Alloy
Junction Box	IP68

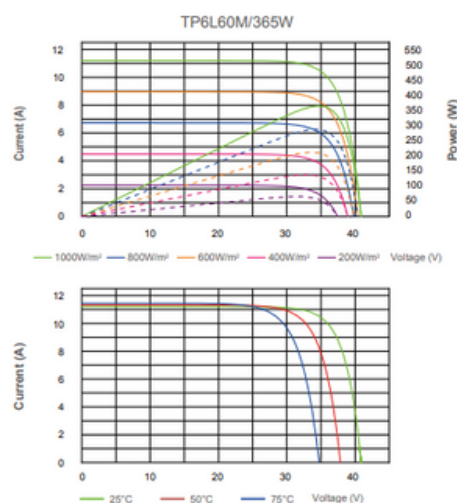
## OPERATING CONDITIONS

Maximum System Voltage	1000V/1500V/DC(IEC)
Operating Temperature	-40°C ~ +85°C
Maximum Series Fuse	20A
Static Loading	Snow Loading: 5400Pa/ Wind Loading: 2400Pa
Conductivity at Ground	≤0.1Ω
Safety Class	II
Resistance	≥100MΩ
Connector	T01/LJQ-3-CSY/MC4/MC4-EVO2

## TEMPERATURE COEFFICIENT

Temperature Coefficient Pmax	-0.36%/°C
Temperature Coefficient Voc	-0.26%/°C
Temperature Coefficient Isc	+0.043%/°C
NMOT	43±2°C

## I-V CURVE



## TECHNICAL DRAWINGS

