

Tiger Pro 54HC

400-420 Watt

MONO-FACIAL MODULE

P-Type

Positive power tolerance of 0~+3%

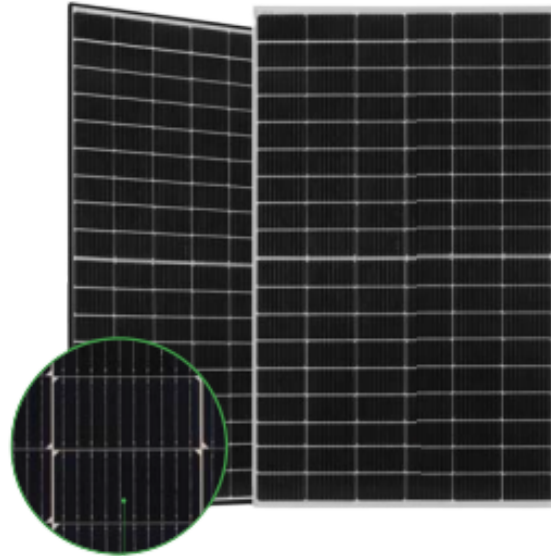
IEC61215(2016), IEC61730(2016)

ISO9001:2015: Quality Management System

ISO14001:2015: Environment Management System

ISO45001:2018

Occupational health and safety management systems



Key Features



Multi Busbar Technology

Better light trapping and current collection to improve module power output and reliability.



PID Resistance

Excellent Anti-PID performance guarantee via optimized mass-production process and materials control.



Reduced Hot Spot Loss

Optimized electrical design and lower operating current for reduced hot spot loss and better temperature coefficient.



Durability Against Extreme Environmental Conditions

High salt mist and ammonia resistance.



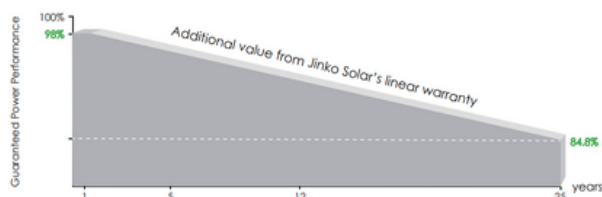
Enhanced Mechanical Load

Certified to withstand: wind load (2400 Pascal) and snow load (5400 Pascal).



POSITIVE QUALITY™
Continuous Quality Assurance

LINEAR PERFORMANCE WARRANTY

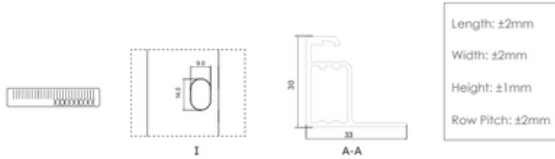
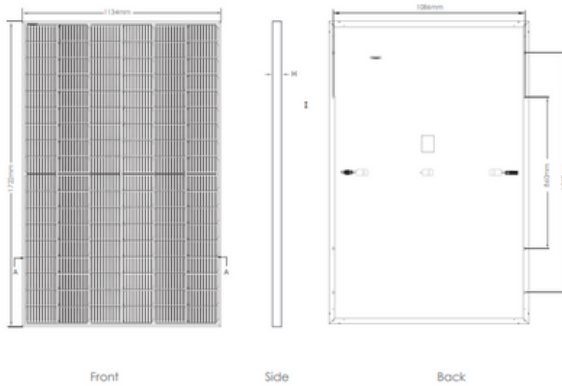


15 Year Product Warranty

25 Year Linear Power Warranty

0.55% Annual Degradation Over 25 years

Engineering Drawings

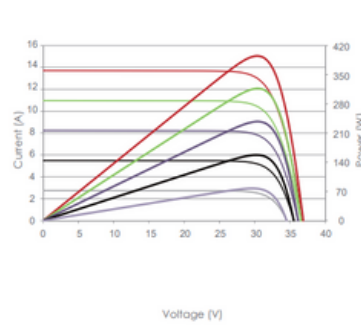


Packaging Configuration

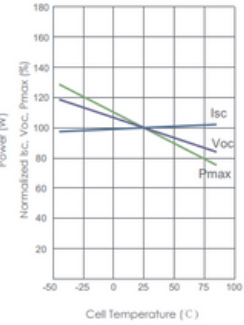
(Two pallets = One stack)
36pcs/pallets, 72pcs/stack, 936pcs/ 40'HQ Container

Electrical Performance & Temperature Dependence

Current-Voltage & Power-Voltage Curves (405W)



Temperature Dependence of Isc, Voc, Pmax



Mechanical Characteristics

Cell Type	P type Mono-crystalline
No. of Cells	108 (2x54)
Dimensions	1722×1134×30mm (67.80×44.65×1.18 inch)
Weight	22.0 kg (48.50 lbs)
Front Glass	3.2mm, Anti-Reflection Coating, High Transmission, Low Iron, Tempered Glass
Frame	Anodized Aluminum Alloy
Junction Box	IP68 Rated
Output Cables	TUV 1×4.0mm ² (+): 400mm, (-): 200mm or Customized Length

SPECIFICATIONS

Module Type	JKM400M-54HL4 JKM400M-54HL4-V		JKM405M-54HL4 JKM405M-54HL4-V		JKM410M-54HL4 JKM410M-54HL4-V		JKM415M-54HL4 JKM415M-54HL4-V		JKM420M-54HL4 JKM420M-54HL4-V	
	STC	NOCT	STC	NOCT	STC	NOCT	STC	NOCT	STC	NOCT
Maximum Power (Pmax)	400	298	405	301	410	305	415	309	420	312
Maximum Power Voltage (Vmp)	30.42	28.42	30.52	28.56	30.62	28.72	30.79	28.88	30.91	29.01
Maximum Power Current (Imp)	13.15	10.47	13.27	10.55	13.39	10.62	13.48	10.69	13.59	10.76
Open-circuit Voltage (Voc)	36.98	34.90	37.06	34.98	37.14	35.05	37.31	35.21	37.43	35.39
Short-circuit Current (Isc)	13.78	11.13	13.85	11.19	13.92	11.24	14.01	11.32	14.12	11.38
Module Efficiency STC%	20.48		20.74		21.00		21.25		21.51	
Operating Temperature (°C)	-40°C~+85°C									
Maximum system voltage	1000/1500VDC (IEC)									
Maximum series fuse rating	25A									
Power tolerance	0~+3%									
Temperature coefficients of Pmax	-0.35%/°C									
Temperature coefficients of Voc	-0.28%/°C									
Temperature coefficients of Isc	0.048%/°C									
NOCT	45±2°C									

*STC: Irradiance 1000W/m²

Cell Temperature 25°C

AM=1.5

NOCT: Irradiance 800W/m²

Ambient Temperature 20°C

AM=1.5

Wind Speed 1m/s